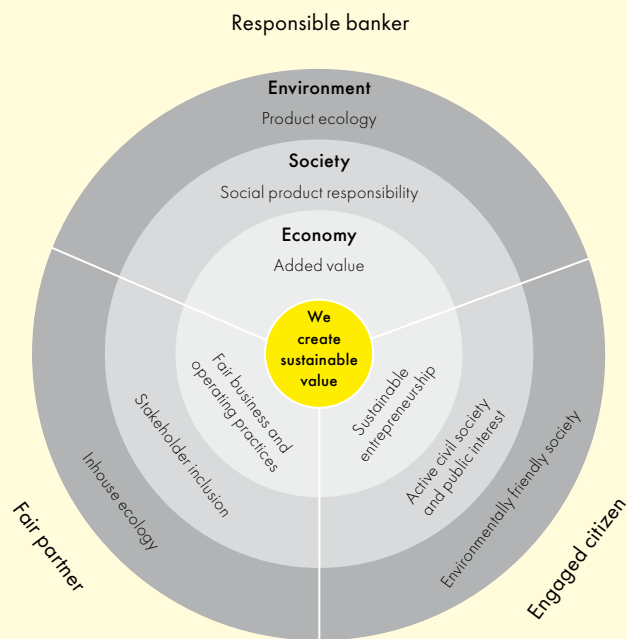


# Important facts at a glance:

## Our sustainability strategy:



Our approach as designers of a sustainable company and society

**14,1** m customers

**50,203** employees



Group-wide share of women in management **54** percent

Training hours for employees 2016  
**2,525,608**

**26,759** employees trained in preventing corruption



Sustainability Report 2015:  
Awarded for the **best report**  
by a large corporation  
at the Austrian Sustainability  
Reporting Award (**ASRA**) 2016

Financing portfolio RBI AG:  
Renewable Energy **about € 174 m**  
Green Real Estate **about € 418 m**  
Green Lending RBI Group:  
**about € 1,572 m**



Introduction of a **Carbon Policy**  
in RBI AG and its network banks  
in spring 2017

Volume of sustainable investments  
(Raiffeisen KAG) rose by approx. 60 percent  
to **more than € 1.8 b**



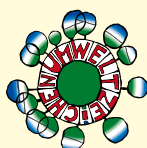
## Listings of RBI AG:



oekom  
prime  
rating:  
„C+“

Group-wide investments  
in the community:  
**about € 4 m**

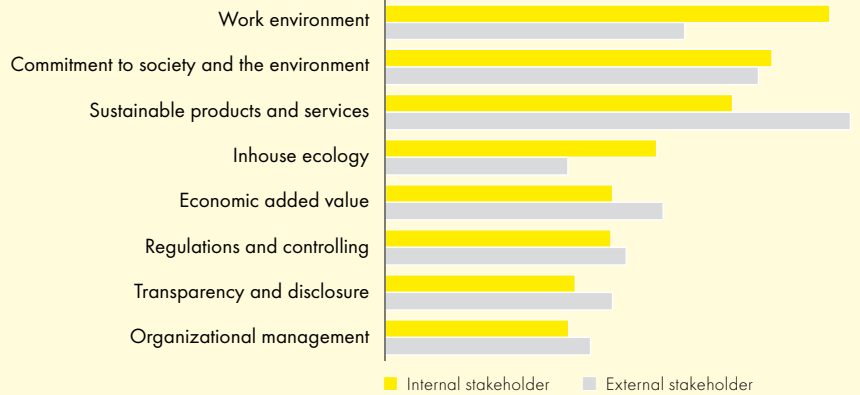
## Certifications of Raiffeisen KAG



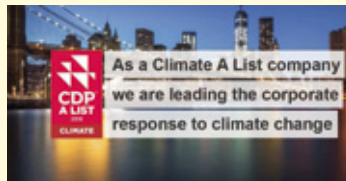
**The five SDGs most material to the RZB Group, ordered by relevance:**

- 8 DECENT WORK AND ECONOMIC GROWTH** • SDG 8: Promote sustained, inclusive and sustainable economic growth, full and productive employment and decent work for all.
- 9 INDUSTRY, INNOVATION AND INFRASTRUCTURE** • SDG 9: Build resilient infrastructure, promote inclusive and sustainable industrialization and foster innovation.
- 13 CLIMATE ACTION** • SDG 13: Take urgent action to combat climate change and its impacts.
- 16 PEACE, JUSTICE AND STRONG INSTITUTIONS** • SDG 16: Promote peaceful and inclusive societies for sustainable development, provide access to justice for all and build effective, accountable and inclusive institutions at all levels.
- 5 GENDER EQUALITY** • SDG 5: Achieve gender equality and empower all women and girls.

**Materiality analysis:**

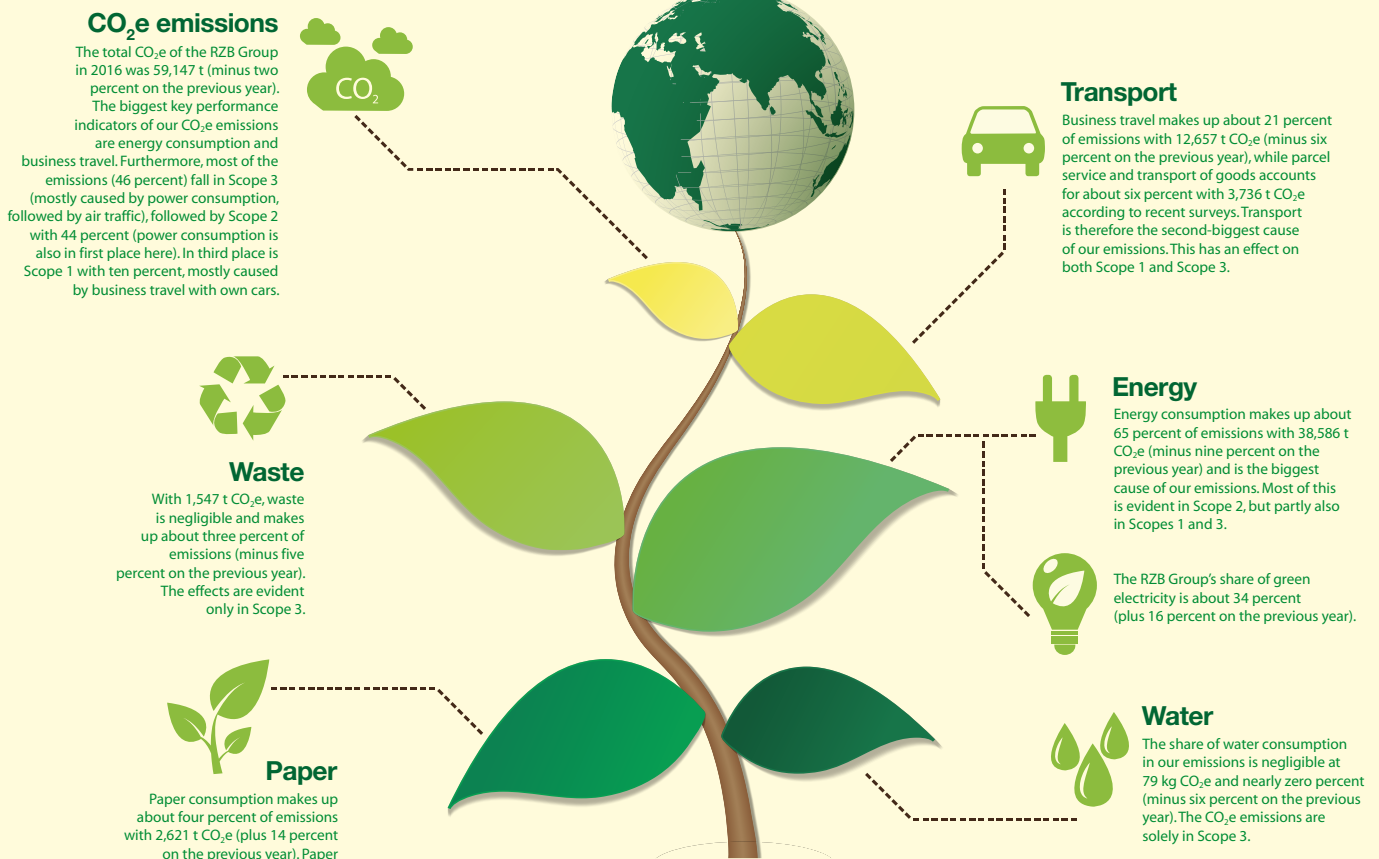


In 2016 RBI belonged to the nine percent of companies that made it onto the **CDP Climate A List**.

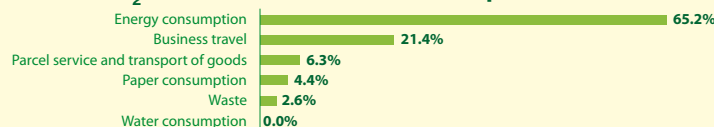


CO<sub>2</sub> emissions reduced by **two percent** compared to the previous year

**Ecological footprint:**



**CO<sub>2</sub>e emissions of the RZB Group result from**



Scope 1 10% Scope 2 44% Scope 3 46%